

Upcoming Show

Up to 25 works on show

Aug. 8-18, 2008**The Basalt Gallery**

200 Basalt Center Circle

Basalt, CO 81621

(970) 927-9668

SHOW LOCATION BASALT, CO**DAN YOUNG**

Paintings near and far

Dan Young finds it difficult to decide between his two passions—fly fishing and plein air painting. One of Colorado's most noted landscape artists, Young traveled to Montana, Utah and Arizona last year where he found inspiration among the breathtaking high mountains. Translating his experiences onto canvas, Young will unveil several new landscape paintings in a solo show that opens Aug. 8 at The Basalt Gallery in Basalt, Colo. Titled *Paintings*

Near and Far, the exhibition will offer a mix of seasonal images from northern Montana to his backdoor in Colorado.

Young, an outdoorsman, frequently backpacked and fly fished as a young boy growing up in Colorado. Today, you can frequently find him painting along a rural road or beside a mountain lake. In this new show he will present several paintings from a pack trip to Wind Rivers in Cora, Wyo., in addition to a few rural scenes and still lifes.

"I try to paint what I love. This year I've noticed I have more high mountain paintings . . . more landscapes without human presence," says Young. "I love to paint out my back door. I don't have to travel very far to find something that inspires."

Just as his subjects run the gamut so do the sizes of his work, which range from 6 by 8 inches up to 36 by 54 inches. Inspired by the high country and lakes from last year's trips, Young continues to paint on-site, bringing a natural feel and



Winter Twilight, oil on canvas, 6 x 8"



233 Road, oil on canvas, 14 x 18"

sensitive light to his work. In his latest oil *Dusting the Peaks* he explores a different perspective looking across a valley that's almost eye level with the peaks behind Snowmass, Colo., called Mount Daly.

"I was able to get into a private subdivision," Young explains. "That was a great deal so I could spend three or four days up there in an area I couldn't normally get to."

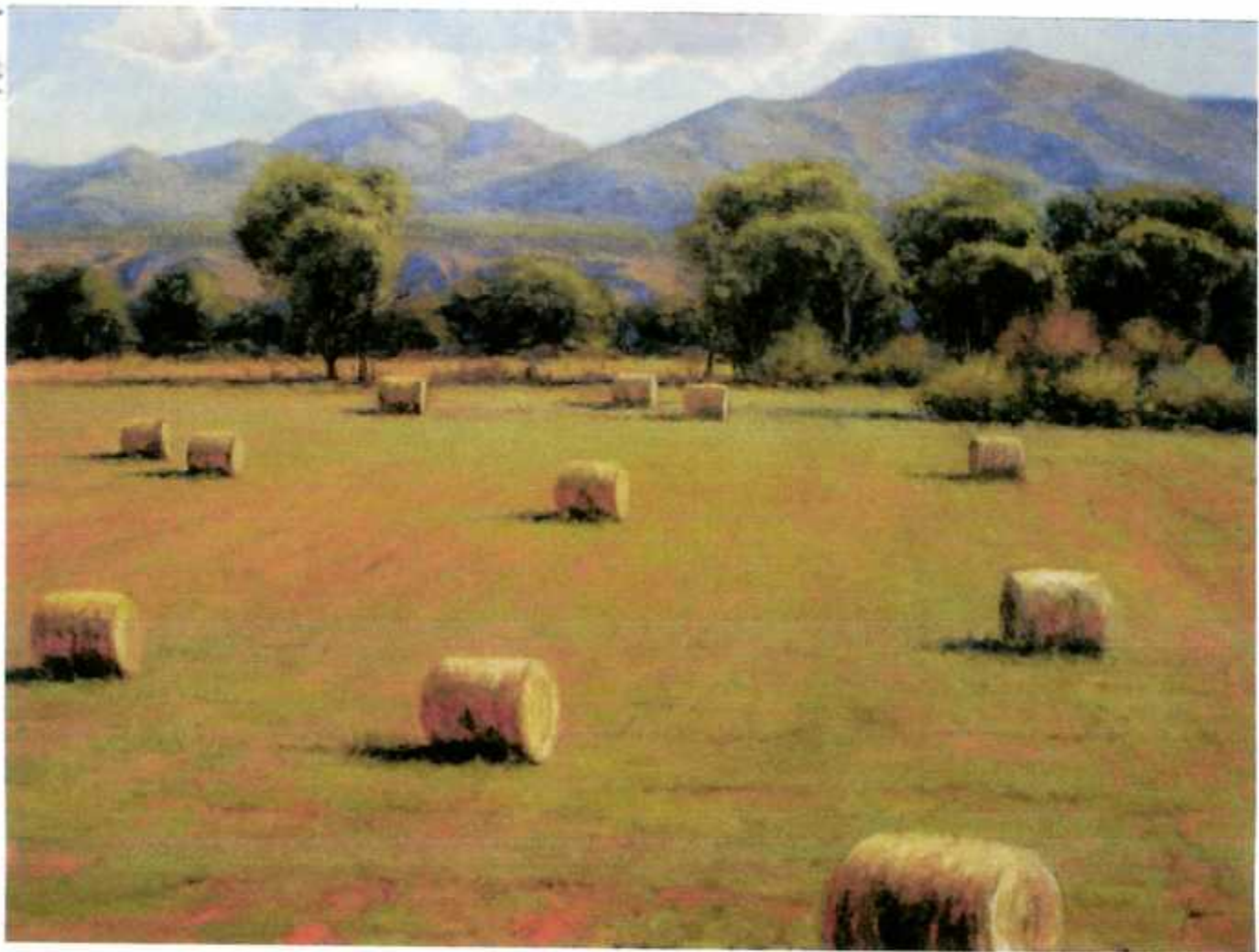
Winter Twilight reflects one of Young's smaller moody pieces. Standing in snowshoes wearing long johns and fingerless wool gloves, he believes the best way to paint snow is to stand out in it. Here, the scene is set in southwestern Colorado with the San Juan Mountains in the background.

"Winter is my favorite time to paint because the colors get rich and deep," he says. "The light remains constant."

In *Summer Bounty*, Young returns to a rural scene for which he's most noted.



Deep in the Wind Rivers, oil on canvas, 30 x 40"



Summer Bounty, oil on canvas, 30 x 40"

Located down the road from his house, he says he looks forward to the start of hay baling season. Here, he plays with light, shadow and composition to portray the hay fields as freshly cut. In the background sits the Grand Hogback Mountain Range near Aspen, Colo.

"The location of the bails changed many times," he recalls. "At one point an irrigation ditch ran through there but it was very distracting so I painted it out."

Known for his rural mountain scenes and ranch lands, Young's painterly style and subject matter strike a chord among a broad collector base. His ability to catch the warm feel of early morning light or a cool late afternoon glow attracts many viewers. His backlit and moody paintings are a favorite among collectors.

In 233 Road, Young revisits a favorite road that frequently finds its way onto his canvases. Also near his home, he says it's a subject he loves to paint and


the piece exemplifies his backlit style that's emits a translucent feel where everything's close in value.


"It has a washed-out feel that's saturated with light that makes it much more interesting," Young says.

A former illustrator, he says he strives to evoke emotion rather than concentrate on details. As a result, his work is constantly evolving.

"As an artist you hope to get a little better every year . . . and you constantly raise that bar higher. If someone looks at one of my paintings and says 'burr' then it's a successful painting," Young says. "If you want to know me, look at my work."

While Young's work is based on existing scenes, he uses his artistic license to add, move or delete elements in his landscapes to make the painting work better. In 1989 he began painting full time, but, he says, it wasn't until five years into his career that his work started taking big steps forward.

"The best advice I ever got was 'get out of your studio and start painting from life,'" he recalls. 

For a direct link to the exhibiting gallery go to 

www.westernartcollector.com

Price Range Indicator

Our at-a-glance Price Range Indicator shows what you can expect to pay for this artist's work.

	Small	Medium	Large
1996	\$400	\$1,500	\$5,000
2001	\$800	\$2,500	\$7,000
2008	\$1,200	\$4,500	\$12,000