

Previews of Works For Sale at Upcoming Shows

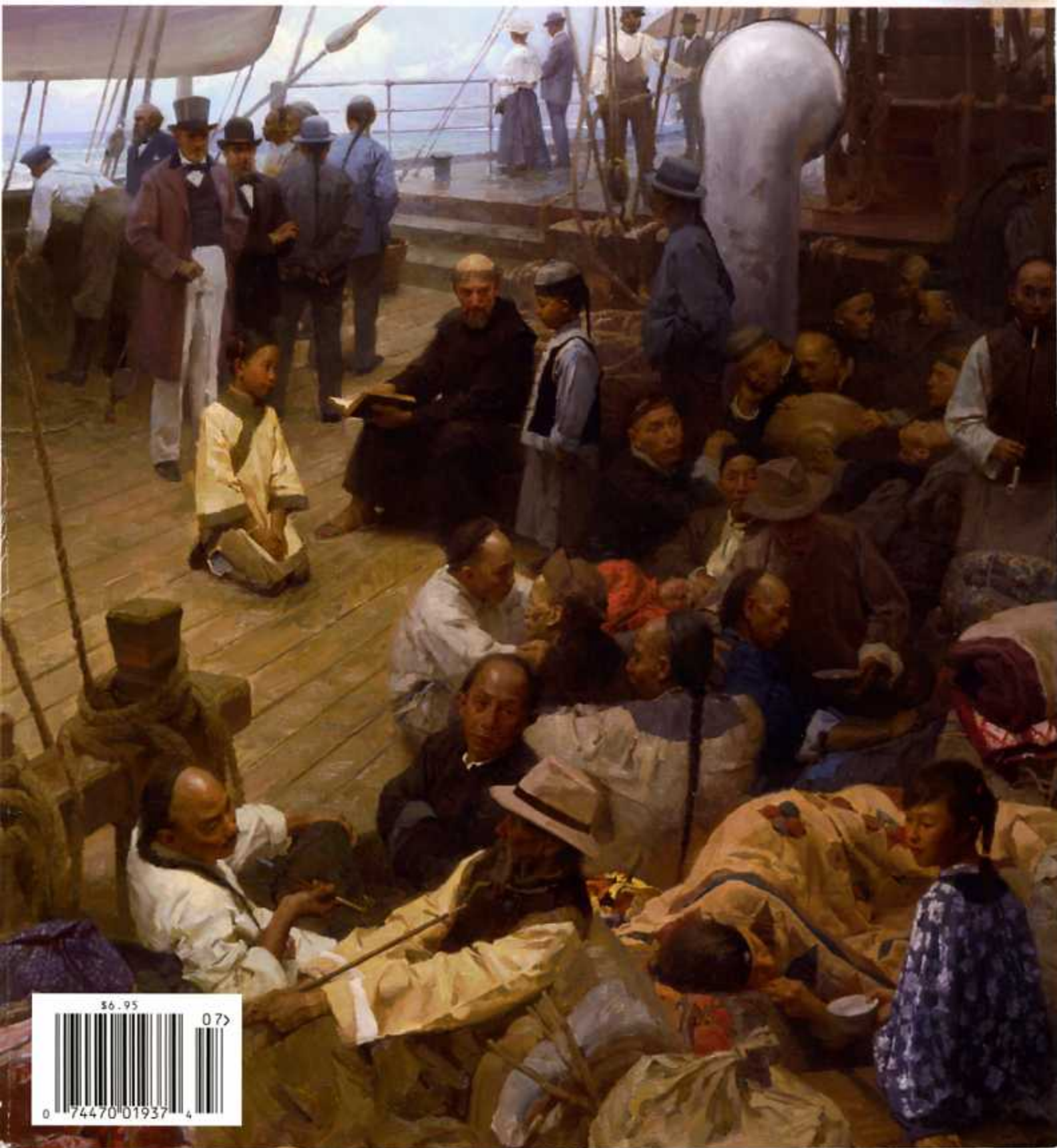
23

WESTERN ART

JULY 2009

COLLECTOR

STATE OF THE ART
WYOMING



\$6.95 07>



0 74470 01937 4

UPCOMING SHOW

Up to 25 works on show
June 24-July 15, 2009

McLARRY Fine Art
225 Canyon Road
Santa Fe, NM 87501
(505) 988-1161

SHOW LOCATION SANTA FE, NM

CHERI CHRISTENSEN



IMAGE COURTESY KYLE ZIMMERMAN PHOTOGRAPHY

Pasteurized



Ole McDonald, oil on board, 12 x 9"

Farm animals continue to take center stage in Cheri Christensen's new paintings. Living on 10 acres in northern New Mexico surrounded by livestock, she finds inspiration at every turn and many become the star of her canvases. In her latest piece *Do You See It?*, Christensen uses her own chickens as models in this entertaining composition.

"I like to add humor to my work and I like to play with titles," she says.

These and other new works will be featured in Christensen's solo show titled *Pasteurized* at McLarry Fine Art in Santa Fe, New Mexico. Many of the scenes stem from road trips to New Mexico, Texas, and her native Washington state.

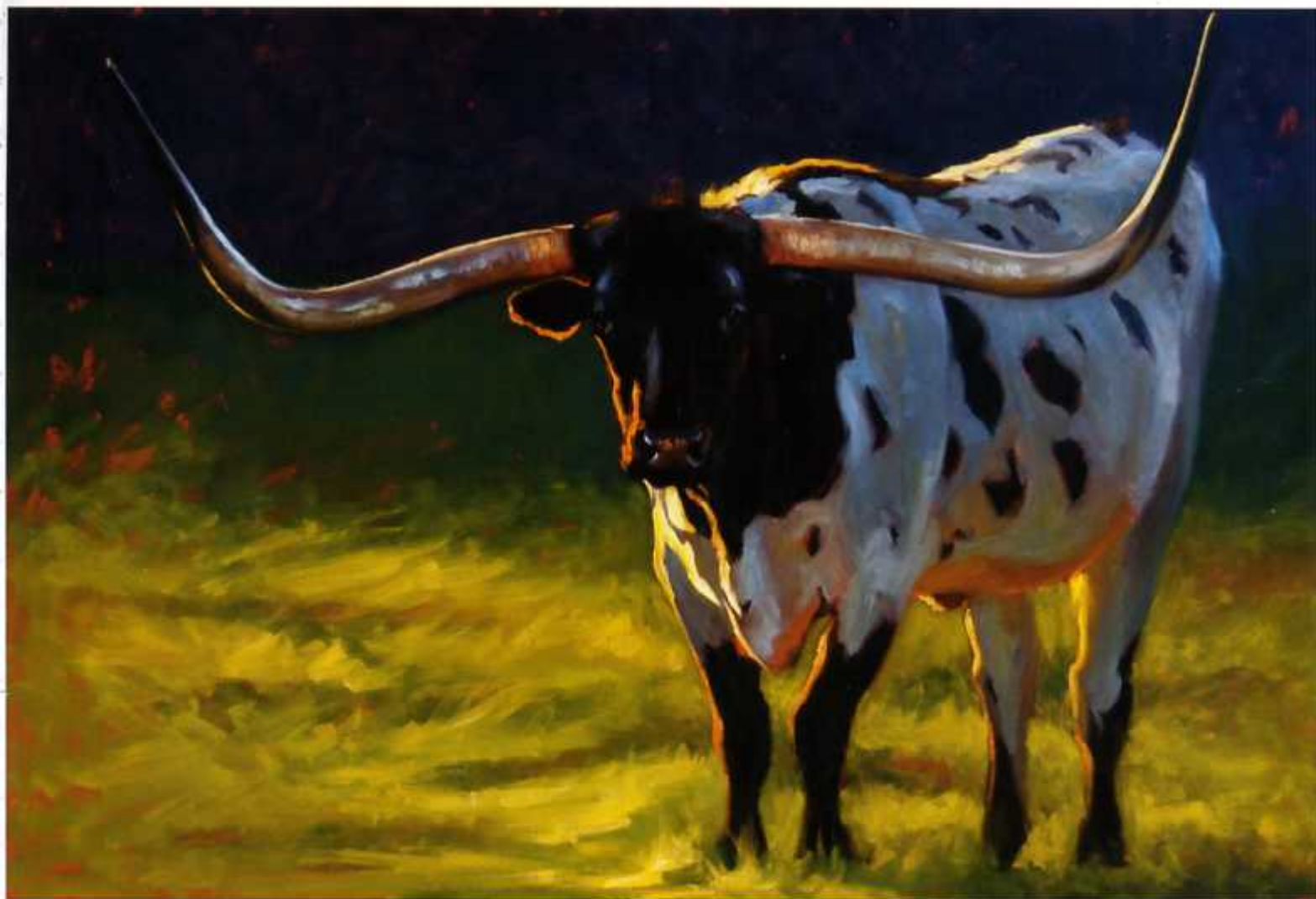
In *Do You See It?*, Christensen conveys the energy of these chicks with quick brushstrokes, palette knife and looser edges.

"I like the group dynamics. It leads you in and makes you look where they're looking," she says.

Inspired by the simple, everyday interaction of farm animals in their environment, Christensen uses strong complementary colors, light, and texture of oil paint to convey a mood and personality of her subject matter. She enjoys playing color relationships against each other, catching the way light dances across the form.

It's not unusual to find Christensen crouched on the ground at eye level with her subject snapping photos that will be used as reference for future compositions.

"Sometimes when I'm photographing, I can see the painting right there in my head," she says. "I'm trying to engage the viewer and get across the personality



Lone Ranger, oil on board, 40 x 60"



The Collector Says . . .

"Cheri Christensen's work inevitably stands out throughout our property. We raise Texas longhorns and Cheri has a remarkable talent for balancing her paintings of longhorns ... somewhere between reality and illusion. She has a deliberate, yet spontaneous ability for nailing her subject's every look, emotion, muscle and curve. Cheri's sense of light, scale and color are truly remarkable."

— Marc A. Sparks, Dallas, Texas

Jack, oil on board, 12 x 12"



Rabble Rousers, oil on board, 36 x 60"



Do You See It?, oil on board, 8 x 10"



A Clear Blue Afternoon, oil on board, 24 x 36"

and feel of the animal. Technically I'm doing that with more abstract or softened backgrounds. I'm keeping the animals sharper and the background more blurry."

In this show, Christensen will incorporate more longhorns into her work. One of her collectors in Texas, Marc A. Sparks, invited her to his Timber Creek Ranch in Dallas to paint the cattle, which struck a chord.


"I fell in love with the longhorns. They're a beautiful majestic animal. I love painting the horns because the light reflects underneath," says Christensen.

A major new piece titled *Lone Ranger* embodies the contrast of black against white. Christensen spotted the subject among a herd of longhorns and singled him out in this dramatic animal portrait.

"He's so majestic on his own," she says. "I tried to keep it simple so the eye went to him. I like the simplicity and strength it conveys."

A member of Oil Painters of America as well as the National Oil and Acrylic Painters Society, Christensen has won awards in numerous regional, national, and international shows. Following in the Russian Impressionist tradition, Christensen paints what she wants, adopting expressionistic and representational styles to create images that are uniquely hers. Attracted to light and color, Christensen will jump out of a car in all kinds of weather to photograph a subject that grabs her attention.

"The same scenes at a certain time of day can be so inspiring. If the light hits

an animal just right, I go nuts. I get so excited. It's very exciting when I see the light like that. That's what moves me," she says. 

For a direct link to the exhibiting gallery go to

www.westernartcollector.com 

Price Range Indicator

Our at-a-glance Price Range Indicator shows what you can expect to pay for this artist's work.

	Small	Medium	Large
1999	\$900	\$2,000	\$7,000
2004	\$1,400	\$3,600	\$10,000
2009	\$2,000	\$5,200	\$15,000

WESTERN ART FOR SALE

MONTANA



Claire Goldrick, *A Lighter Moment - Traveler's Rest*, oil, 16 x 20"

The West Revisited

Opening: July 3, 2009

Exhibition Dates: July 3 - August 9, 2009

"Artists from around Montana and the United States gather in the beautiful Bitterroot Valley to celebrate Western art at Ponderosa Art Gallery in Hamilton. The group show is held annually and for 2009 features over 50 new works in a wide price range. Artists participating include Cyrus Afsary, Greg Scheibel, Claire Goldrick, R.E. Pierce, Gayla Wiedenheft and Ed DuRose. The show opens July 3 with an opening reception from 3 to 8 p.m. Many of the artists will be in attendance."

Ponderosa Art Gallery, 944 Springhill Road, Hamilton, MT, 59840, (406) 375-1212

NEVADA



Charles M. Russell, *The Truce*, gouache and watercolor on paper, 19 x 27"

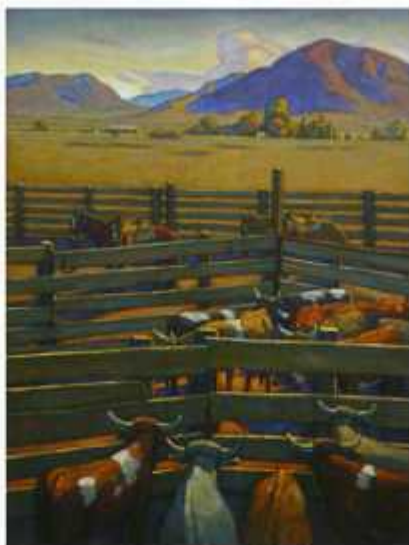
Coeur d'Alene Art Auction

Sale: July 25, 2009

"The Coeur d'Alene Art Auction will hold its annual sale of classic Western, wildlife, and sporting art at the Silver Legacy Resort. In recent years the Coeur d'Alene Art Auction has become the largest and most important sale of its kind. Highlights of this year's sale include several works by the noted Taos Founders, E.J. Couse, Oscar Berninghaus, E. Martin Hennings and Joseph Sharp. Other important works by Charles M. Russell, Carl Rungius, and Frank Tenney Johnson, among others."

Coeur d'Alene Art Auction, The Silver Legacy Resort Casino, 407 N. Virginia Street, Reno, NV, 89501, (208) 786-0558

NEW MEXICO



Howard Post, *Lunch Break*, oil on canvas, 52 x 42"

Howard Post Solo Show

Opening: July 1, 2009

Exhibition Dates: July 1 - 31, 2009

"One of today's top impressionist artists, Howard Post depicts the contemporary West in a modern, simplified style. His universal paintings of landscapes, people and animals are based on real experiences and photos he has taken while traveling across the country. Throughout July, Medicine Man Gallery in Santa Fe will feature Post's latest paintings in which he spotlights the West and Southwest, including a few mountain scenes."

Medicine Man Gallery, 602A Canyon Road, Santa Fe, NM, 87501, (505) 820-7451



Cheri Christensen, *Jack*, oil on board, 12 x 12"

Pasteurized

Opening: June 24, 2009

Exhibition Dates: June 24 - July 15, 2009

"Farm animals continue to take center stage in Cheri Christensen's new paintings. Living on 10 acres in northern New Mexico surrounded by livestock, she finds inspiration at every turn and many become the star of her canvases. These and other new works will be featured in Christensen's solo show titled *Pasteurized* at McLarry Fine Art. Many of the scenes stem from road trips to New Mexico, Texas, and her native Washington state."

McLarry Fine Art, 225 Canyon Road, Santa Fe, NM, 87501, (505) 988-1161

WYOMING



Kathy Wipfler, woodblock print, 6 x 4"

New Woodblock Prints

Opening: June 1, 2009

"In a new addition to her body of work in oils, artist Kathy Wipfler is now producing a line of limited-edition woodblock prints. These striking images of cowboys and wildlife subjects are hand printed by the artist. New releases are available at Simpson Gallagher Gallery in Cody and Trailside Galleries in Jackson." — *Kathy Wipfler*
Simpson Gallagher Gallery, 1161 Sheridan Avenue, Cody, WY, 82414, (307) 587-4022



Gary Huber, *Drifting into Spring*, pastel on hardboard, 20 x 16"

Gary Huber New Works

Opening: May 26, 2009

"Wyoming artist Gary Huber finds inspiration in the subjects he has been drawn to since he was a child playing in the stream on his family farm and camping in the mountains nearby. Huber is recognized as one of the top landscape artists working in pastels in Wyoming and winner of many awards including Best in Pastel at the Western Spirit Art Show and Best of Show in the Mile High National Exhibition." — *Gary Huber*

Gary Huber Studio, 139 N. Wyoming Avenue, Buffalo, WY, 82834, (307) 684-2345

To find out how your shows can be included in our Savvy Collector's Preview Guide, please call 866.619.0841.